

Country Button Doll
&
Mini Quilt



An
OldeSouthernQuiltings.com
Original

Country Button Doll & Mini Quilt



Materials needed for Doll

- 37 - buttons – asst colors (*shirt button size*)
- 60" embroidery floss
- 2 pieces 1/8" x 6" satin ribbon for bows on legs
- 2 piece 1/8" x 12" satin ribbon for hair bow(s)
- 1 – 1" wooden bead (*natural color*)
- 1 – small wooden spool (*1 1/8" x 5/8 "*)
- White Glue
- Curly Hair
- Asst scraps fabric for garments :
 - 1 – 12" x 2." fabric for bottom of dress
 - 1 – 2" x 5" fabric to dress top

Materials needed for Mini Quilt

1 – 8" x 8" fabric for backing

1 Strip 28" x 1 ½" fabric for borders (2- 6" strips & 2- 8" strips)

1 Strip 36" x 1 ½" fabric for binding

Asst scraps for quilt blocks:

9 – 2 ½ " squares

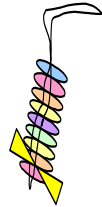
5 - buttons- asst colors (shirt button size)

Batting is optional - (but nothing heavier than "felt" weight)

Instructions for Doll:

Making Legs:

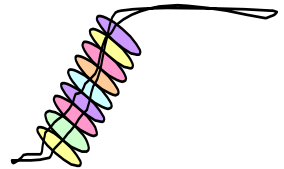
- Cut 2 – 12” pieces floss,
- fold one piece floss in half and string on 2 buttons tie one 6” piece of ribbon to make a bow above the last button
- String on 7 more buttons –
Trim off any extra ribbon ends.
- Tie a knot at the end of the floss tight against the last button
- tie the floss end onto the base of the wooden spool adjusting the length for the leg to hang free from spool



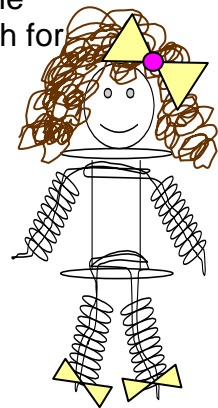
Repeat for second leg

Making Arms:

- Cut 2 – 12” pieces floss
- Fold one piece floss in half and string on 9 buttons
- Tie a knot at the end of the floss tight against the last button
- Tie the floss end onto the top of the wooden spool adjusting the length for the arm to hang free from spool



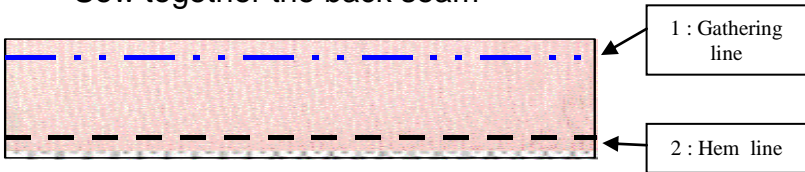
Repeat for second Arm



Making Dress:

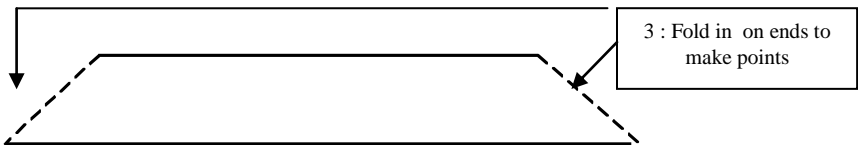
Bottom of Dress

- **Make a small 1/4" hem on the bottom of the 12" x 2" fabric (Diagram 1)**
- **Gather the top of the 12:" x 2" fabric and glue to the top of (Diagram 2) the center part of the wooden spool making sure the arms are on the outside of the dress**
- Sew together the back seam

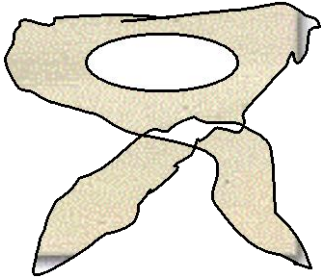


Top of Dress (*shawl*)

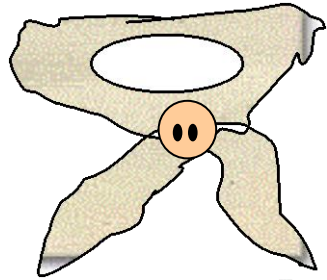
- Fold the 2 x 5" piece of fabric in half lengthwise and sew to make a tube
- Turn the tube right side out with the seam being in the center of the tube
- Fold in the ends to make a point as shown below and sew closed (Diagram 3)
- Wrap around and glue to the top outside edge of wooden spool and crossing over in the front (Diagram 4)
- Sew button in center over the crossed over part of the top of dress (Diagram 5)



4 : Wrap and cross over



5 : Sew on button



Final Assembly

- Glue wooden bead (*head*) onto the spool
- Glue Curly Hair to the wooden bead (*head*) and add the bows to the hair.
- Use a permanent marker to add eyes on the wooden bead (*head*)

Hair Bow(s)

- Using the ½" x 12" ribbon, tie into a bow for the hair
- You can choose one or two bows depending on the hairstyle you choose.



Instructions for Quilt:

This is a simple 9-patch design

approx 7" x 8" finished size

Use a 1/4" seam allowance for this project

Cut 9 – 2 1/2" x 2 1/2" pieces asst fabric squares

Sew together in 3 rows of 3

Cut 2 – 1 1/2" x 6" strips fabric for the side borders

Sew one strip onto each side of the 9 patch

Cut 2 – 1 1/2" x 8" strips fabric for the top and bottom borders

Sew one strip onto the top and one strip onto the bottom of the 9-patch block

Cut 1 – 36" x 1 1/2" strip fabric for the binding

Assembly:

Lay your backing fabric wrong side against your quilt top wrong side *(You can add your batting at this point as an option)*

Cut your backing fabric to match the size of your quilt top making sure to square up your pieces

Pin the layers together

Sew around all sides

Adding the Binding:

Place your binding *(right side of fabric against right side of quilt top)* starting in the center of one side of the quilt top

Using a 1/4 seam allowance, sew the binding onto the quilt

Miter each corner as you come to it and continue until all binding has been sewed onto the quilt

Fold binding fabric over and turn under on backside of quilt

Blind stitch the binding to the quilt

Finish the binding by tucking in and overlapping the end and hand sewing the end seams shut.

Finishing:

Sew One Button onto the center of each fabric square on Quilt top

